

Two new publications from our DIPH.DEM team

We are excited to announce two new publications from our DIPH.DEM team!

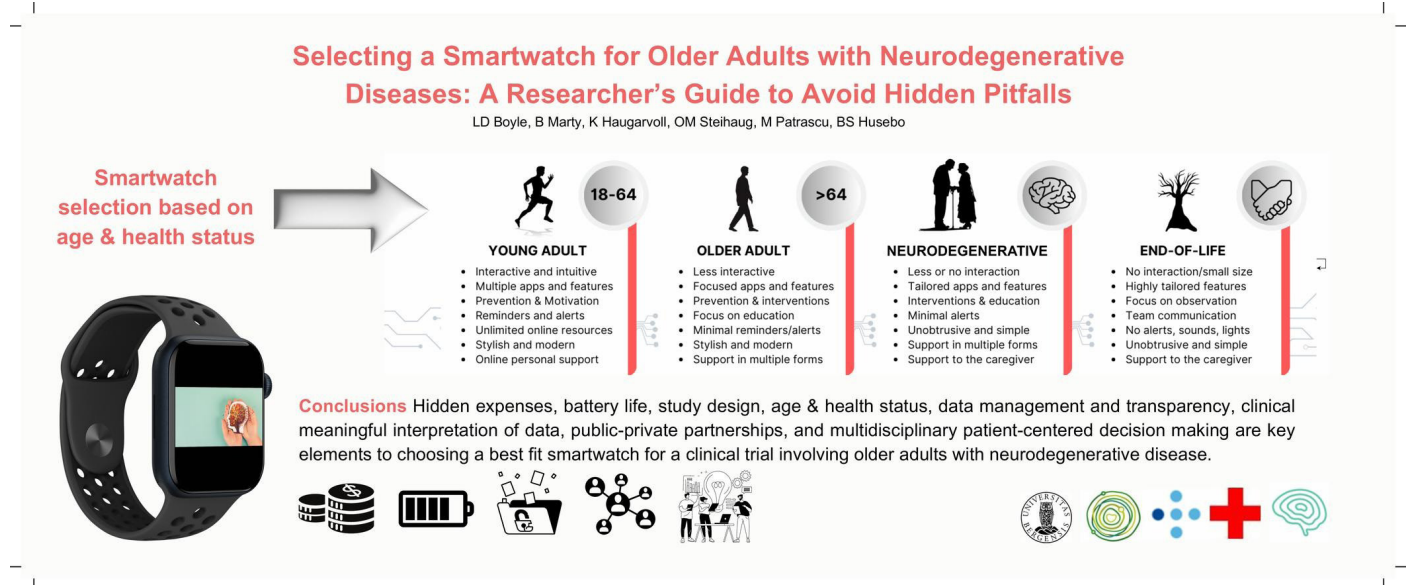


Illustration by SEFAS, Lydia Boyle.

The first publication provides researchers with a new framework for selection of a smartwatch for trials involving people with neurodegenerative disorders:

Boyle, L. D., Marty, B., Haugarvoll, K., Steihaug, O. M., Patrascu, M., & Husebo, B. S. (2025). [Selecting a smartwatch for trials involving older adults with neurodegenerative diseases: A researcher's framework to avoid hidden pitfalls](#). Journal of Biomedical Informatics, 162, 104781.

The second offers a synthesis of current literature about the use of human activity and behavioral recognition for people with Parkinson's disease or dementia:

Boyle, L. D., Giritka, L., Marty, B., Sandgathe, L., Haugarvoll, K., Steihaug, O. M., Husebo, B. S., & Patrascu, M. (2025). [Activity and Behavioral Recognition Using Sensing Technology in Persons with Parkinson's Disease or Dementia: An Umbrella Review of the Literature](#). Sensors, 25(3), 668. <https://doi.org/10.3390/s25030668>

We thank our contributors and look forward to presenting new publications with results from the DIPH.DEM study later this year!